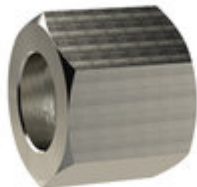


## Prekr. mat. za cevne nav.G 1/2,za vel. priklj. I.D. 6/9



Kategorija: [Hexagonal swivel nut, nickel-plated brass](#)

Šifra: **136672RIE**

(slika je simbolična)

### Kratek opis

Hexagonal coupl. nut G 1/2 sleeve size I.D. 6, I.D. 9, nickel-plated br., Max. working pressure 25 bar, Max. operating temp. 150°C

Suitable for air, water, oil, steam, etc.

### Tehnične Specifikacije

Material	Nickel-plated brass CW614N
Navoj	G 1/2
Za priključek tip št-	MSN2361206 + MSN2361208 + MSN2361209
L1 [mm]	18.0
a/f [mm]	24
Max. delovni tlak [bar]	25
Max. delovna temperatura [°C]	150