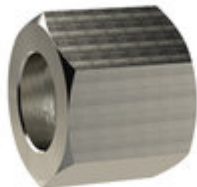


Prekr. mat. za cevne nav.G 1/2,za vel. priklj. I.D. 4/6/9



Kategorija: [Hexagonal swivel nut, nickel-plated brass](#)

Šifra: **111549RIE**

(slika je simbolična)

Kratek opis

Hexagonal coupl. nut G 1/2, sleeve size I.D. 4, I.D. 6, I.D. 9,
Max. working pressure 25 bar, Max. operating temp. 150 °C
Suitable for air, water, oil, steam, etc.

Tehnične Specifikacije

Material	Nickel-plated brass CW614N
Navoj	G 1/2
Za priključek tip št-	LW 4, LW 6, LW 9
L1 [mm]	16.0
a/f [mm]	24
Max. delovni tlak [bar]	25
Max. delovna temperatura [°C]	150