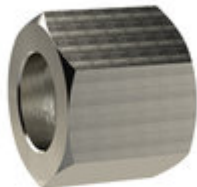


Prekr. mat. za cevne nav.G 1/2,za vel. priklj. I.D. 13



Kategorija: [Hexagonal swivel nut, nickel-plated brass](#)

Šifra: **136673RIE**

(slika je simbolična)

Kratek opis

Hexagonal coupl. nut G 1/2, sleeve size I.D. 13, nickel-plated br., Max. working pressure 25 bar, Max. operating temp. 150 °C

Suitable for air, water, oil, steam, etc.

Tehnične Specifikacije

| | |
|-------------------------------|---|
| Material | Nickel-plated brass CW614N |
| Navoj | G 1/2 MSN2361210 + MSN2361212 + MSN2361213 |
| Za priključek tip št- | 18.0 |
| L1 [mm] | 24 |
| a/f [mm] | 25 |
| Max. delovni tlak [bar] | 25 |
| Max. delovna temperatura [°C] | 150 |