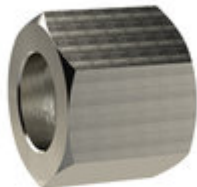


Prekr. mat. za cevne nav.G 1,za vel. priklj. I.D. 19



Kategorija: [Hexagonal swivel nut, nickel-plated brass](#)

Šifra: **136676RIE**

(slika je simbolična)

Kratek opis

Hexagonal coupl. nut G 1, sleeve size I.D. 19, nickel-plated brass, Max. working pressure 25 bar, Max. operating temp. 150 °C

Suitable for air, water, oil, steam, etc.

Tehnične Specifikacije

Material	Nickel-plated brass CW614N
Navoj	G 1
Za priključek tip št-	MSN236119
L1 [mm]	21.0
Max. delovni tlak [bar]	25
a/f [mm]	38
Max. delovna temperatura [°C]	150