

»G« Series

GZ 11–GZ 55



Product features

Two-way manifolds - narrow design, with one outlet at the top and one outlet at the bottom or 90° rotated (one to the front and one outlet to rear).

Specifications / Technical data

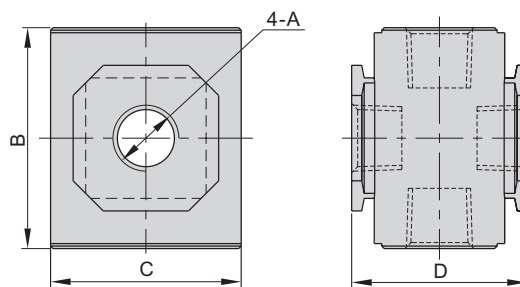
Art. No.	Size 300		Size 400		Size 400	
	GZ 11	GZ 12	GZ 32	GZ 33	GZ 34	GZ 55
Fluid	Air					
Port size	1/4"	3/8"	3/8"	1/2"	3/4"	1"
Connections	2 + 2					
Pressure range	0 to 9 bar (0 to 0.9 MPa, 0 to 130 psi)					
Proof pressure	15 bar (1.5 MPa, 215 psi)					
Temperature range	-20 to 70 °C					

Ordering information

Art. No.	Type
GZ 11–GZ 55	Two-way manifolds

Body dimensions

GZ 11–GZ 55



Art. No.	A	B	C	D
GZ 11	1/4"	44	38	35
GZ 12	3/8"	44	38	35
GZ 32	3/8"	52	52	42
GZ 33	1/2"	52	52	42
GZ 34	3/4"	76	68	60
GZ 55	1"	76	68	60

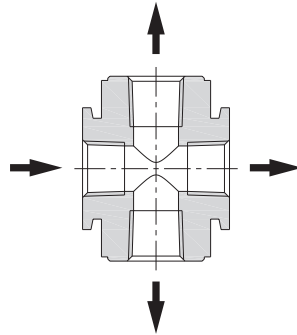
(Values in mm, exception A = inch)

»G« Series




GZ 11–GZ 55

Components and materials

GZ 11–GZ 55



Accessories

	For GZ 11, GZ 12	For GZ 32, GZ 33	For GZ 34, GZ 55	Type
	Art. No.	Art. No.	Art. No.	
	UB 300	UB 400	UB 600	Joiner without wall mounting
	LB 300	LB 400	LB 600	Joiner with wall mounting, 1 drilled hole
	TB 300	TB 400	TB 600	Joiner with wall mounting, 2 drilled holes