



FU 980

3/2-way valves

Electro-pneumatic

Size 4

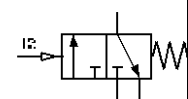
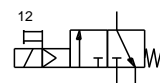
FU 975 - FU 975-AC - FU 979-115V - FU 979

G 3/4

FU 976 - FU 976-AC - FU 980-115V - FU 980

G 1

24V = – 24/50 – 115/50 – 230/50



(optional)

Description

Electro-pneumatically operated 3/2-way solenoid valve for pressurising and relieving downstream pneumatic systems by remote control.

The valve is operated (opened) by a continuous electrical signal.

Ordering information

- The valves are delivered in single packs
- Connector socket included

Characteristics

Type	FU 975 - FU 975-AC - FU 979-115V - FU 979	FU 976 - FU 976-AC - FU 980-115V - FU 980
Port (thread)	G 3/4 (optional: NPT)	G 1 (optional: NPT)
Port (air relief)	G 1/2	
Type of construction – start-up valve	3/2-way seat valve	
Medium	Compressed air, neutral gases	
Mounting position	Interconnected devices vertical / single devices any	
Temperature (medium / ambient)	Max. 50°C	
Input pressure Pin	2 to 10 bar (higher pressures on request)	
Standard voltage	24 V = ; 24V/50Hz ; 115V/50Hz ; 230V/50Hz	
Electrical power input	DC: 1 to 2.5 W AC: 3 VA	
Cyclic duty factor	100%	
Nominal flow Qn	12,500 l/min (Pin = 6 bar, Δp = 1 bar)	
Operation	Electro-pneumatic	Optional: Pneumatic (G 1/8 female port)
Electrical connection	Connector socket EN 175301-803, form C / ISO 15217 2 poles + PE	
Degree of protection	IP65 acc. to DIN 40050	
Mounting type	Bracket, wall mounting	

Materials

Part	Material
Head piece	IXEF1022®
Cover	Schulaform®
Piston	Brass / NBR
Plunger	Brass / NBR
Valve cone	Brass / NBR
Counter-pressure spring	Stainless steel
Threaded plate	Die-cast zinc
O-rings	NBR

Standards and directives

98/37/EC (PED)	Scope: Art. 3, Section 3 Unmarked (acc. to Annex II, Diagram 2, Art. 3, Section 3 is applicable)
ISO 4414	(Pneumatic fluid power – General rules and safety requirements for systems and their components)

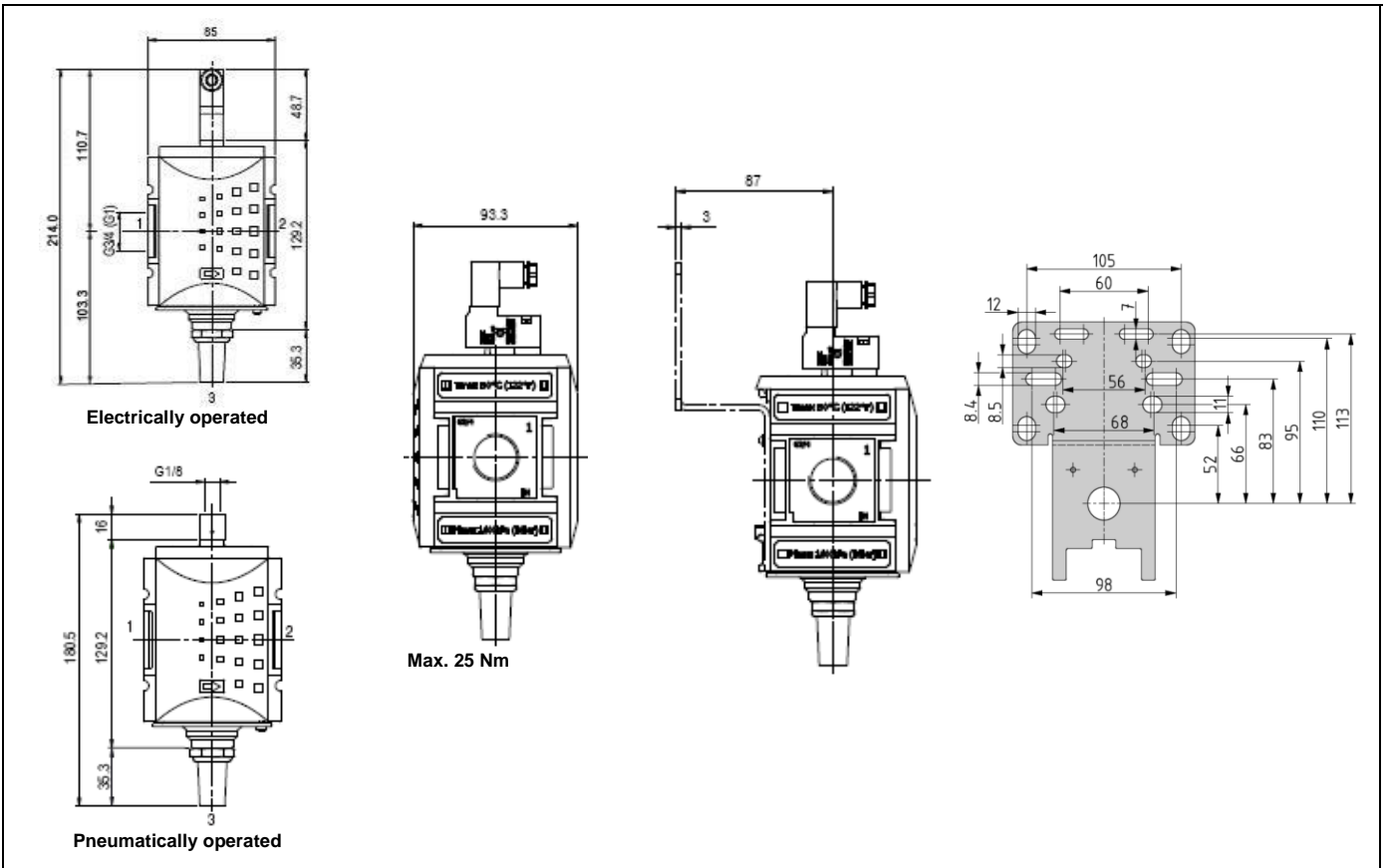
Accessories

Designation	Art. No.
Mounting bracket, incl. screws	H 854
Wall bracket, incl. screws	WK 103
Joiner set, incl. screws	KP 300
Connector, form C	1920.FU
Silencer	567-5/M

Spare parts

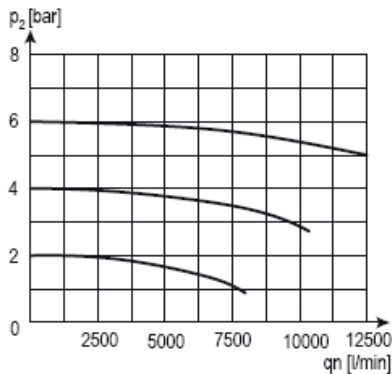
Designation	Art. No.
Pilot valve 24 VDC	400-900-42
Pilot valve 115 VAC / 50 Hz	400-900-115
Pilot valve 230 VAC / 50 Hz	400-900-17
Pilot valve 24 VAC / 50 Hz	400-900-301
Wall bracket with connection thread G 3/4	WK 104-34
Wall bracket with connection thread G 1	WK 104-1

Dimensions



Flow rates

Flow characteristic



Return exhaust

