
Service unit, 3-piece

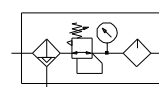
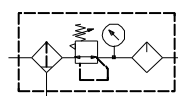
Size 2

FU 623 FU 635

G 3/8

FU 624 FU 636

G 1/2

Filter rating 5 µm

Description

- **Service unit** as a pre-assembled combination of individual service units in the "*Futura*" series
- "KP200" or "WK 102" joiner set for seamless integration with other devices

Characteristics

Type	FU 623	FU 635	FU 624	FU 636
Port ISO 228	G 3/8 (semi)	G 3/8 (auto)	G 1/2 (semi)	G 1/2 (auto)
Type of construction	- Centrifugal filter, sintered filter element 5 µm - Diaphragm pressure regulator with self-relieving design - Proportional oil-mist lubricator, refilling under pressure			
Medium	Compressed air, neutral gases			
Mounting position	Vertical, bowl at bottom			
Control ranges	0.1 to 1 bar / 0.1 to 2 bar / 0.2 to 4 bar / 0.5 to 8 bar / 0.5 to 10 bar / 0.5 to 16 bar			
Temperature Medium / ambient	Max. 50°C			
Input pressure Pin - With automatic / semi-automatic drain - With manual drain	Min. 1.5 bar / max. 16 bar Max. 16 bar			
Filter rating	Pore size 5 µm			
Bowl capacity	Filter regulator 49 cm ³ / lubricator 80 cm ³			
Condensate drain	Semi-automatic – pressureless exhaust (semi) / fully automatic (auto)			
Drip rate / qv = 1000l/min	1 to 2 drops / min (recommended value)			
Oil grade	CL 32 acc. to DIN 51517 – ISO VG 32			
Weight	1300 kg (semi) / 1338 kg (auto)			
Mounting type	Bracket, wall mounting			

Materials

Part	Material
Head piece	IXEF1022®
Diaphragm	Brass-NBR-PA6
Valve cone	Brass-NBR
Bowl (filter / lubricator)	Polycarbonate
Bowl guard	Polyamide
Metal bowl (filter / lubricator)	Die-cast zinc
Sight dome	Polycarbonate
O-rings 37.5 x 2.5	NBR70
Filter element	Cellpor (polyethylene)
Threaded plates	Die-cast zinc Z 410

Ordering information

- The service units are delivered in single packs
- Pressure gauge included

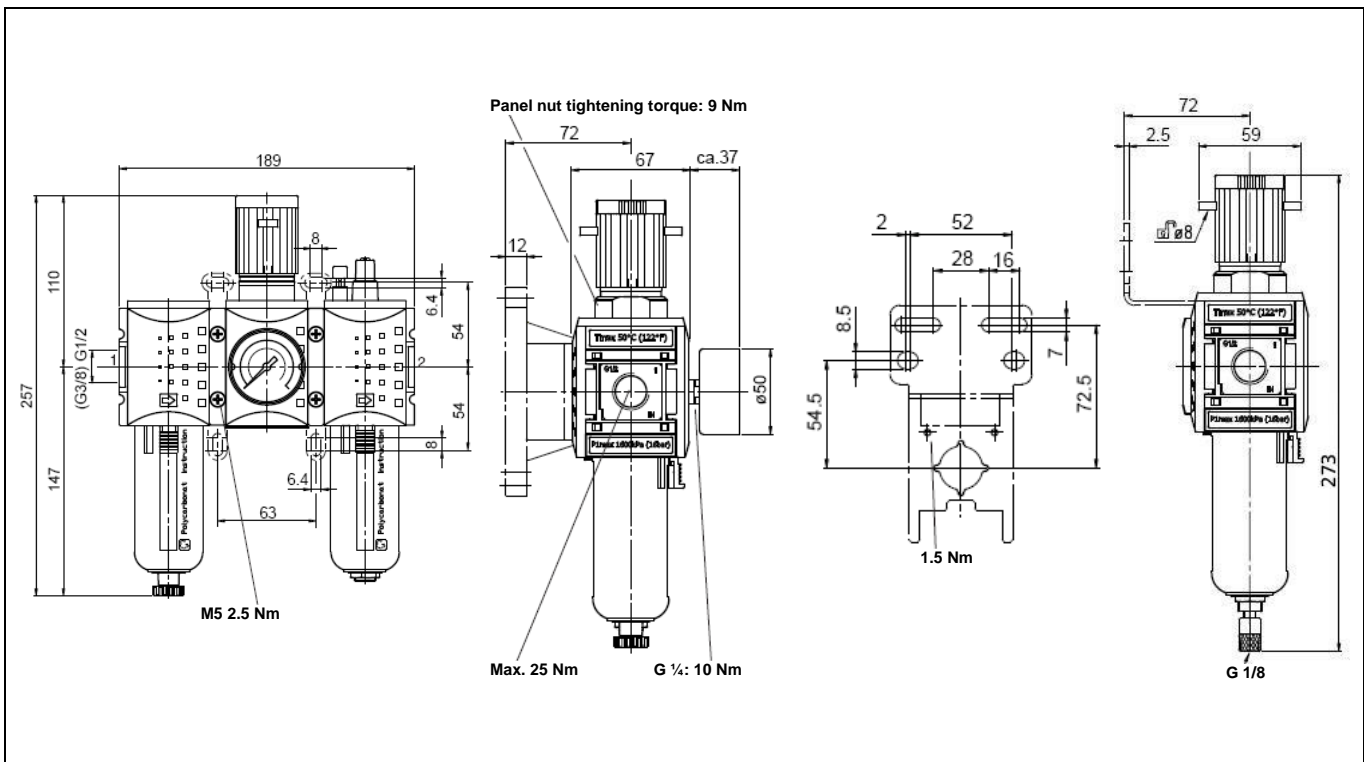
Accessories

Designation	Art. No.
Mounting bracket, incl. screws	H 852
Joiner set with wall bracket	WK 102
Joiner set	KP 200
Polycarbonate bowl with bowl guard / filter	BSF 12
Polycarb. bowl with bowl guard / lubricator	BSL 12
Polycarb. bowl with fully autom. drain valve	BSF 12-A
Metal bowl / filter	MF 12
Metal bowl / lubricator	ML 12
Metal bowl with fully automatic drain valve	MF 12-A
Panel nut M42x1.5	FU 33-55

Spare parts

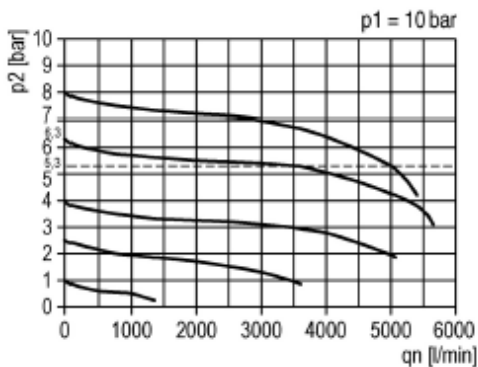
Designation	Art. No.
Seal kit for pressure regulator	22.7180.4
Filter element 5 µm	844.6.905
Sight dome	901.7.990
O-ring 37.5 x 2.5	3725.4.9

Dimensions

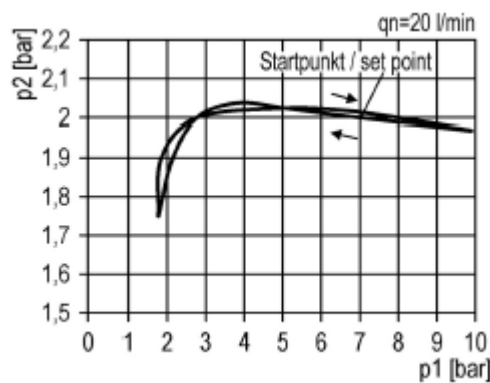


Flow rates

Flow characteristic



Hysteresis



Lubricator operating limit

