

## Service unit, 2-piece

Size 2

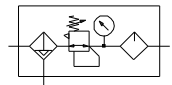
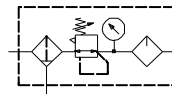
**FU 603    FU 613**

G 3/8

**FU 604    FU 614**

G 1/2

Filter rating 5 µm



### Description

- Service unit as a pre-assembled combination of individual service units in the "*Futura*" series
- "KP200" or "WK 102" joiner set for seamless integration with other devices

### Characteristics

Type	FU 603	FU 613	FU 604	FU 614
Port ISO 228	G 3/8 (semi)	G 3/8 (auto)	G 1/2 (semi)	G 1/2 (auto)
Type of construction	- Centrifugal filter, sintered filter element 5 µm - Diaphragm pressure regulator with self-relieving design - Standard oil-mist lubricator, refilling under pressure			
Medium	Compressed air, neutral gases			
Mounting position	Vertical, bowl at bottom			
Control ranges	0.1 to 1 bar / 0.1 to 2 bar / 0.2 to 4 bar / 0.5 to 8 bar / 0.5 to 10 bar / 0.5 to 16 bar			
Temperature Medium / ambient	Max. 50°C			
Input pressure Pin - With automatic / semi-automatic drain - With manual drain	Min. 1.5 bar / max. 16 bar Max. 16 bar			
Filter rating	Pore size 5 µm			
Bowl capacity	Filter regulator 49 cm <sup>3</sup> / lubricator 80 cm <sup>3</sup>			
Condensate drain	Semi-automatic – pressureless exhaust ( <b>semi</b> ) / fully automatic ( <b>auto</b> )			
Drip rate / qv = 1000l/min	1 to 2 drops / min (recommended value)			
Oil grade	CL 32 acc. to DIN 51517 – ISO VG 32			
Weight	0.700 kg ( <b>semi</b> ) / 0.735 kg ( <b>auto</b> )			
Mounting type	Bracket, wall mounting			

### Materials

Part	Material
Head piece	IXEF1022®
Diaphragm	Brass-NBR-PA6
Valve cone	Brass-NBR
Bowl (filter / lubricator)	Polycarbonate
Bowl guard	Polyamide
Metal bowl (filter / lubricator)	Die-cast zinc
Sight dome	Polycarbonate
O-rings 37 x 2.5	NBR70
Filter element	Cellpor (polyethylene)
Threaded plates	Die-cast zinc Z 410

### Ordering information

- The service units are delivered in single packs
- Pressure gauge included

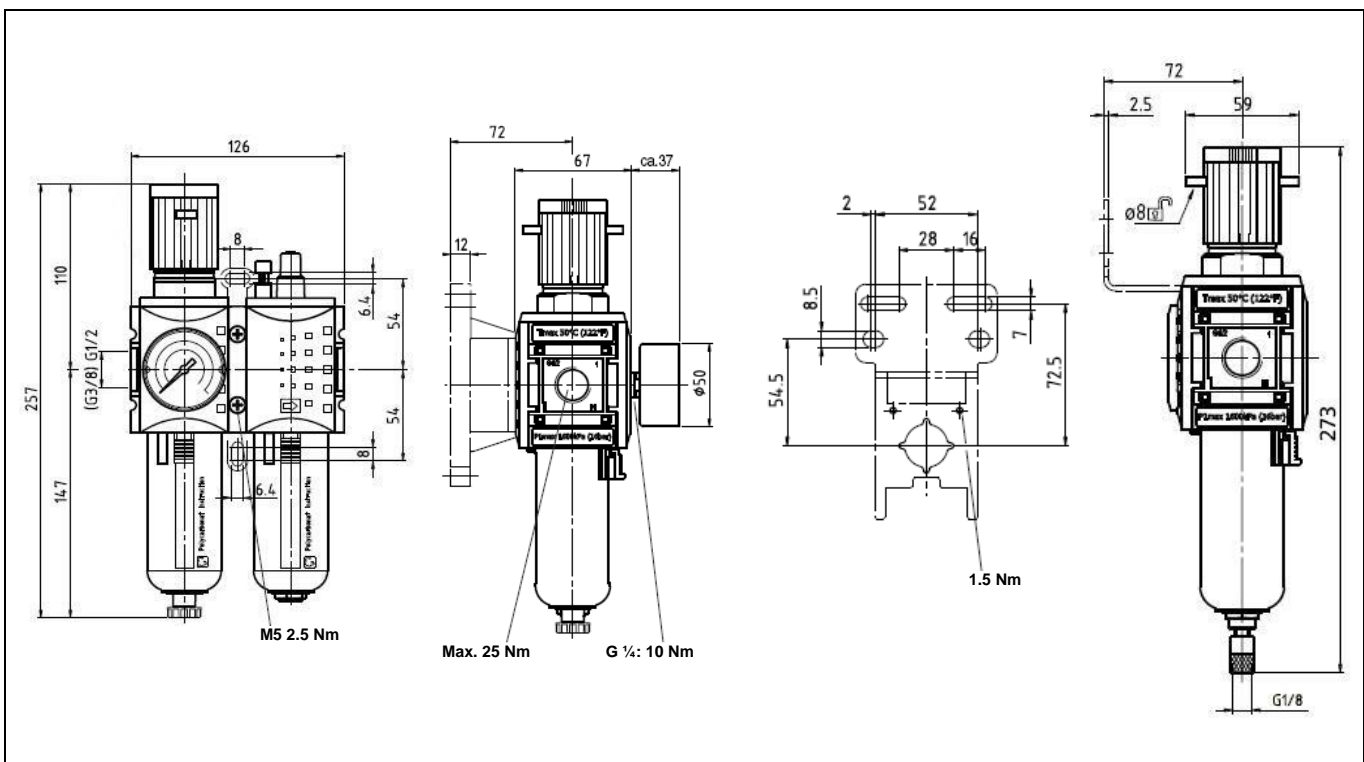
## Accessories

Designation	Art. No.
Mounting bracket, incl. screws	H 852
Joiner set with wall bracket	WK 102
Joiner set	KP 200
Polycarbonate bowl with bowl guard / filter	BSF 12
Polycarb. bowl with bowl guard / lubricator	BSL 12
Polycarb. bowl with fully autom. drain valve	BSF 12-A
Metal bowl / filter	MF 12
Metal bowl / lubricator	ML 12
Metal bowl with fully automatic drain valve	MF 12-A
Panel nut M42x1.5	FU 33-55

## Spare parts

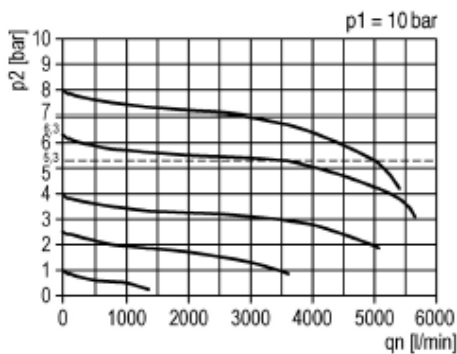
Designation	Art. No.
Seal kit for pressure regulator	22.7180.4
Filter element 5 µm	844.6.905
Sight dome	901.7.990
O-ring 37 x 2.5	3725.4.9

## Dimensions

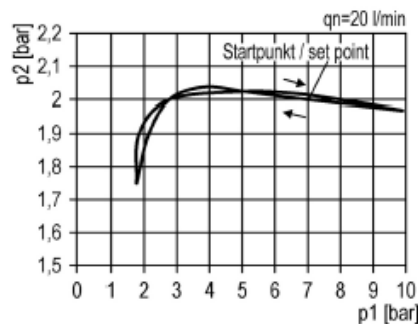


## Flow rates

## Flow characteristic



## Hysteresis



## Lubricator operating limit

