



### Characteristics

Type	570.12 B	570.12 D
Type of construction	Diaphragm pressure regulator <b>with self-relieving design</b> (reversible)	
Type	571.12 B	571.12 D
Type of construction	Diaphragm pressure regulator with <b>non-self-relieving design</b> (non-reversible)	
Pipe thread	G 1/2	
Pressure gauge	G 1/4	
Control range	0.5 to 8.0 bar	1.5 to 15.0 bar
<b>Special versions on request</b>		
- NPT threads		
Input pressure	Max. 30 bar	Max. 50 bar
Mounting position	Any	
Mounting type	Bracket and nut, hole Ø50.5 mm	
<b>Temperature</b>		
Medium	Max. 80°C	
Ambient	Max. 80°C	
Weight [g]	2000 / 2150 with pressure gauge	

### Materials

Part	Material
Head piece	1.4404 (AISI 316L)
Spring bonnet	1.4404 (AISI 316L)
Adjusting screw	1.4301
Diaphragm, type 570	PTFE on NBR-carrier
Diaphragm, type 571	PTFE on NBR-carrier
Valve cone	1.4404 (AISI 316L) / FKM
O-rings	FKM

### Main spare parts

Designation	Part No.
Repair kit	
- Type 570	22.5702.4
- Type 571	22.5712.4.16
Pressure gauge, 1.4571	
G 1/4, Ø 63	
0 to 10.0 bar	4084
0 to 16.0 bar	4085

### Operation

- Stainless steel pressure regulator containing no non-ferrous metals for use in the food processing, chemical, mining, plant construction and special machinery industries
- Suitable for use in medical equipment
- All applications where excellent resistance to corrosion is essential

**- For liquid media → Type 571.12**

**No liability can be accepted if explosive media or media which could be detrimental to health are used**

## Pressure regulator

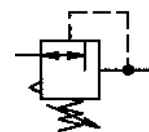
Size 2

G 1/2

0.5 to 8.0 bar  
1.5 to 15.0 bar

**570.12**

**571.12**

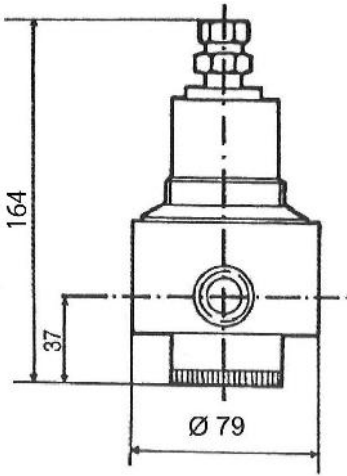


### Ordering information

Designation	Order No.
Pressure regulator (reversible) <b>with self-relieving design</b> and pressure gauge Control range 0.5 to 8.0 bar 1.0 to 15.0 bar	<b>570.12 B</b> <b>570.12 D</b>
Pressure regulator with <b>non-self-relieving design</b> (non-reversible) and pressure gauge Control range 0.5 to 8.0 bar 1.0 to 15.0 bar	<b>571.12 B</b> <b>571.12 D</b>
<b>Accessories</b>	
- Mounting bracket with fixing nut M50 x 1.5	<b>576/3</b>
- Pressure gauge 0 to 10 bar 0 to 16 bar	<b>4084</b> <b>4085</b>



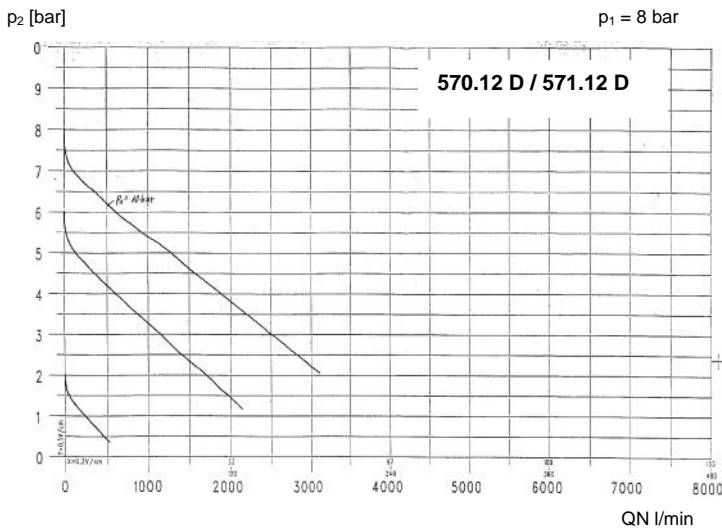
Dimensions [mm]



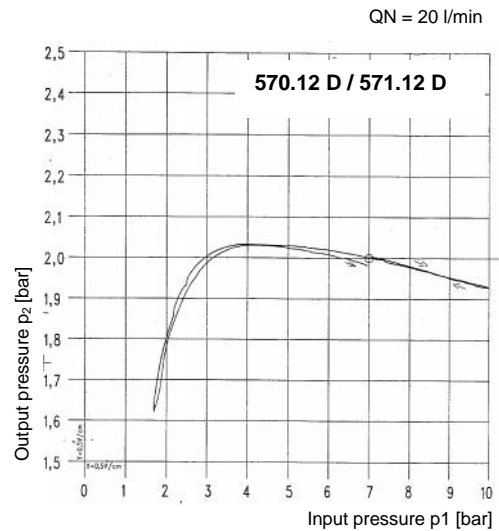
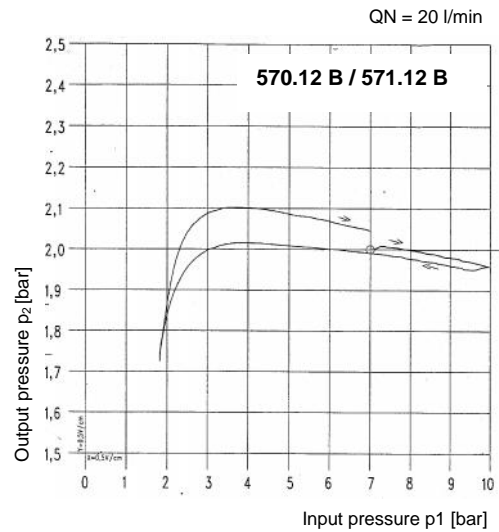
Type	Press. gauge ∅	Pipe thread G	Pr. gauge port G
570.12 571.12	63	1/2	1/4

Flow rates

Flow characteristic



Hysteresis



© Riegler 2-36