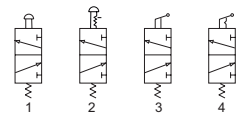




## »M3« Series

515.1000–515.7004

Symbol



### Product features

Traditional and robust valve series. Suitable for all applications where pneumatic actuators have to be operated. These valves are designed for in-line installation. Mounting in any position.

The following types are available:

- Two port sizes (1/8" and 1/4")
- Type of operation: manual, latching (bistable) / non-latching (monostable)
- 3/2-way version

### Valve's specification

Art. No.	515.1000, 515.2000, 515.3000, 515.4000–515.4002, 515.5000–515.5002, 515.6000–515.6002, 515.7001	515.1001, 515.2001, 515.3001, 515.4003–515.4005, 515.5003–515.5005, 515.6003–515.6005, 515.7004
Fluid	Air (to be filtered by $\leq 40 \mu\text{m}$ filter element)	
Operating	External control direct acting type	
Port size	1/8"	1/4"
Valid area of section	9.0 mm <sup>2</sup> (Cv = 0.50)	12.0 mm <sup>2</sup> (Cv = 0.67)
Valve type	3 port 2 position	
Lubrication	Not required	
Pressure range	0 to 10 bar (0 to 1.0 MPa; 0 to 145 psi)	
Proof pressure	15 bar (1.5 MPa; 215 psi)	
Temperature	-20 to 70 °C	
Material of body	Aluminium alloy	
Flow rate measurement at P <sub>1</sub> = 8 bar, P <sub>2</sub> = 6 bar and pressure drop $\Delta p = 1$ bar	450 L/min	550 L/min

### Port identification pneumatic valves

	Designation at the valve	Corresponds to ISO 1219-1
Input port	P	1
Output port	A	2
Output port	B	4
Exhaust port	R	3
Exhaust port	S	5
Control port	Y	12
Control port	Z	14

### Ordering information

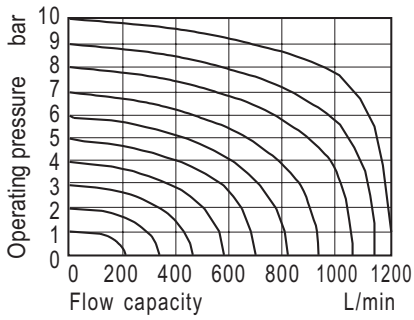
Art. No.	Type
515.1000–515.1001	3/2-way valve, manually operated, with long lever, NC, monostable
515.2000–515.2001	3/2-way valve, manually operated, with short lever, NC, monostable
515.3000–515.3001	3/2-way valve, manually operated, with rocker lever, NC, bistable
515.4000–515.4005	3/2-way valve, manually operated, with pushbutton, NC, monostable, for panel mounting
515.5000–515.5005	3/2-way valve, manually operated, with mushroom pushbutton, NC, monostable, for panel mounting
515.6000–515.6005	3/2-way valve, manually operated, with short wing lever, NC, monostable, for panel mounting
515.7001–515.7004	3/2-way valve, manually operated, with mushroom pushbutton and emergency latch, NC, bistable, for panel mounting

»M3« Series

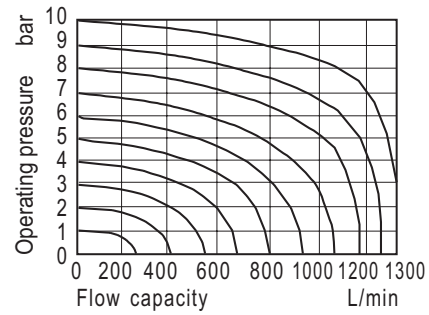
515.1000–515.7004

Flow chart

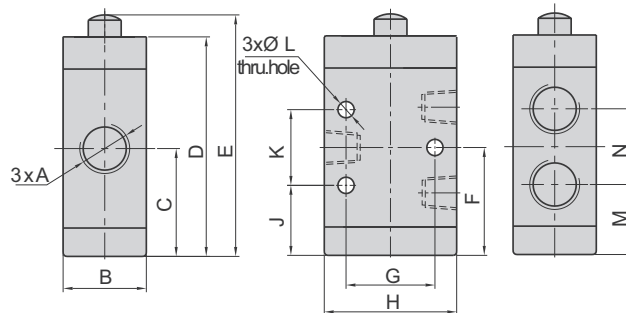
1/8"



1/4"



Body dimensions

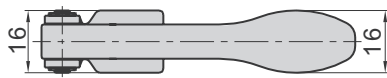


Art. No.	A	B	C	D	E	F	G	H	J	K	L	M	N
515.1000–	1/8"	22	28.5	58	63.8	28.5	23.5	35	18.5	20	4.3	18.5	20
515.7004	1/4"												

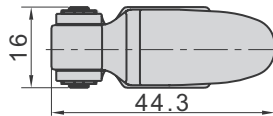
(Values in mm, exception A = inch)

Control set dimensions (mm)

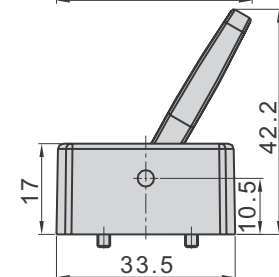
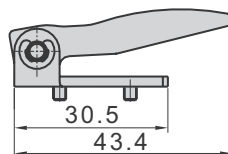
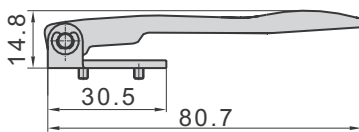
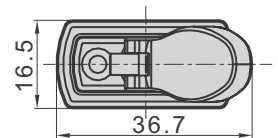
515.1000, 515.1001



515.2000, 515.2001



515.3000, 515.3001

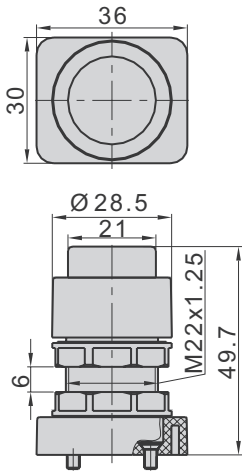


**»M3« Series**

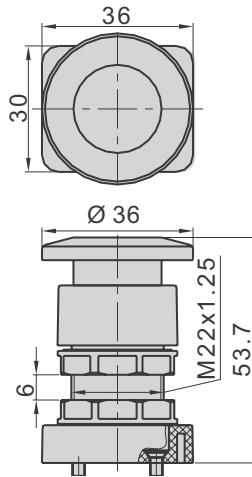
515.1000–515.7004

**Control set dimensions (mm)**

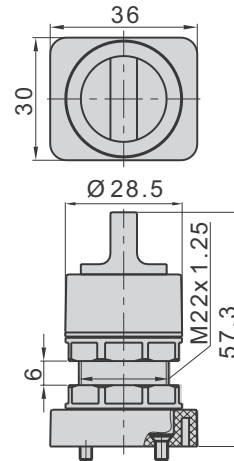
515.4000–515.4005



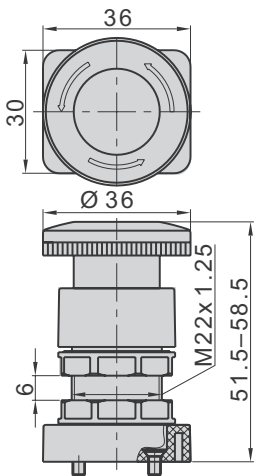
515.5000–515.5005



515.6000–515.6005



515.7001–515.7004


**Reversal stroke**

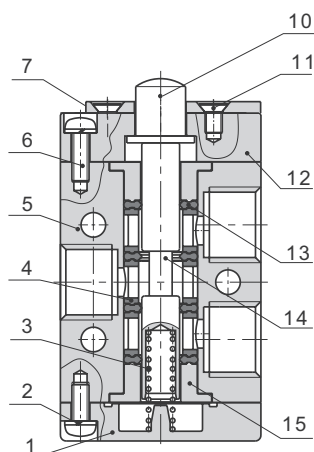
Art. No.	Spool stroke	Button stroke
515.1000–515.1001	2.0 to 3.0	11.0 to 16.0
515.2000–515.2001	2.0 to 3.0	5.5 to 8.0
515.4000–515.4005	2.0 to 3.3	3.8 to 5.1
515.5000–515.5005	2.0 to 3.3	3.8 to 5.1
515.6000–515.6005	2.0 to 3.3	5.1 to 6.4
515.7001–515.7004	2.0 to 3.3	5.9 to 7.2

(Values in mm)

## »M3« Series

515.1000–515.7004

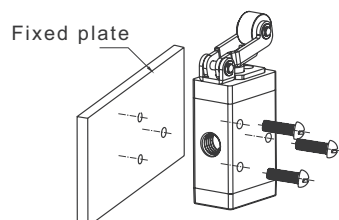
### Components and materials



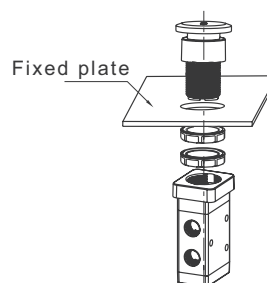
No.	Item	Material
1	Cover	PA 66
2	Screw	Steel
3	Spring	Stainless steel
4	Spacer	POM
5	Body	Aluminium alloy
6	Screw	Steel
7	Holder	Steel
10	Press bolt	Steel
11	Screw	Steel
12	Cover	Aluminium alloy
13	O-ring	NBR
14	Spool	Aluminium alloy
15	Centering bush	Aluminium alloy

### Assembly chart

#### Body mounting



#### Panel mounting



**Ordering information**

<b>Art. No.</b>	<b>Ident No.</b>
515.1000	115982
515.1001	115983
515.2000	115986
515.2001	115987
515.3000	115990
515.3001	115991
515.4000	115994
515.4001	115995
515.4002	115996
515.4003	115997
515.4004	115998
515.4005	115999
515.5000	116006
515.5001	116007
515.5002	116008
515.5003	116009
515.5004	116010
515.5005	116011
515.6000	116018
515.6001	116019
515.6002	116020
515.6003	116021
515.6004	116022
515.6005	116023
515.7001	116030
515.7004	116031