



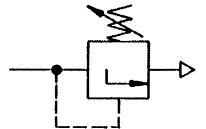
Pressure limiting valve

Size 0

G 1/4

490.02 to 490.10

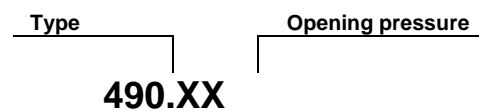
0.10 to 2.0 bar
0.10 to 3.0 bar
0.15 to 7.0 bar
0.50 to 10.0 bar



Characteristics

Type	490.XX
Port	G 1/4
Pressure gauge port	G 1/8
Medium	Air and non-corrosive, non-toxic gases and liquids
Type of construction	Spring-loaded, non-return diaphragm valve with adjustable opening pressure
Mounting position	Any
Input pressure p_1	Max. 10 bar
Opening pressure p_2	0.1 to 2.0 bar, 0.1 to 3.0 bar 0.15 to 7.0 bar, 0.5 to 10.0 bar
Temperature Ambient / medium	Max. 60°C (other temperature ranges on request)
Mounting type	In-line, bracket kit Panel mounting, cutout $\varnothing 30.5$
Weight [g]	140

Ordering information



Output pressure	
XX=	Adjustment range
02	0.10 to 2.0 bar
03	0.10 to 3.0 bar
07	0.15 to 7.0 bar
10	0.50 to 10.0 bar

Operation

- Push-to-lock adjusting knob
- Pressure gauge included
- Silencer recommended

Materials

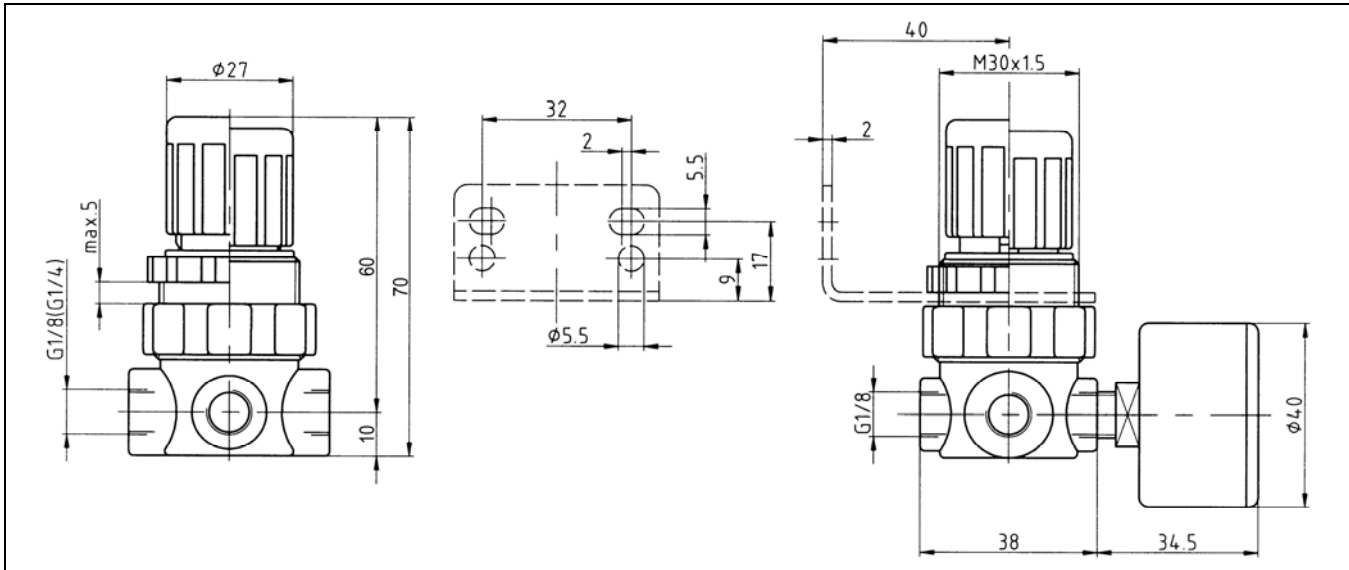
Designation	Material
Head piece	Zinc – Z 410
Spring bonnet	POM-brass
Diaphragm	NBR
Valve seat	Brass
Pressure spring	Galvanised steel
O-ring 9 x 1.5	NBR

Applications

- Pressure limiting valves protect pneumatic systems against damage caused by excess pressure
- Suitable for **compressed air and non-toxic, non-flammable gases***
- Requires a silencer to restrict noise emission

*Also suitable for liquids

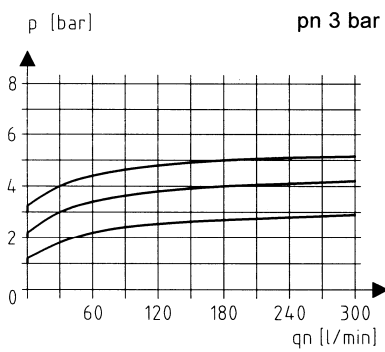
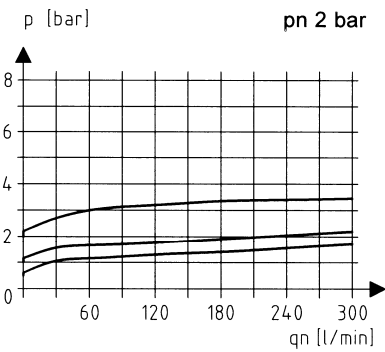
Dimensions [mm]



Relief characteristic

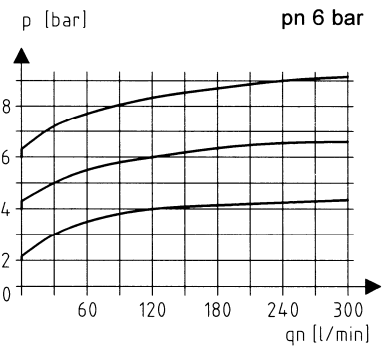
Relief characteristic

Accessories



Designation	Part No.
- Nut M 30 x 1.5	R 11-55
- Mounting bracket with nut R 11-55	MV 30
- Silencer G 1/4	
- Brass base	569-2
- Flat design	567-2/M
- Standard	

Relief characteristic



Main spare parts

Designation	Part No.
Repair kit, compl. - Diaphragm	22.490.4

Typical application

