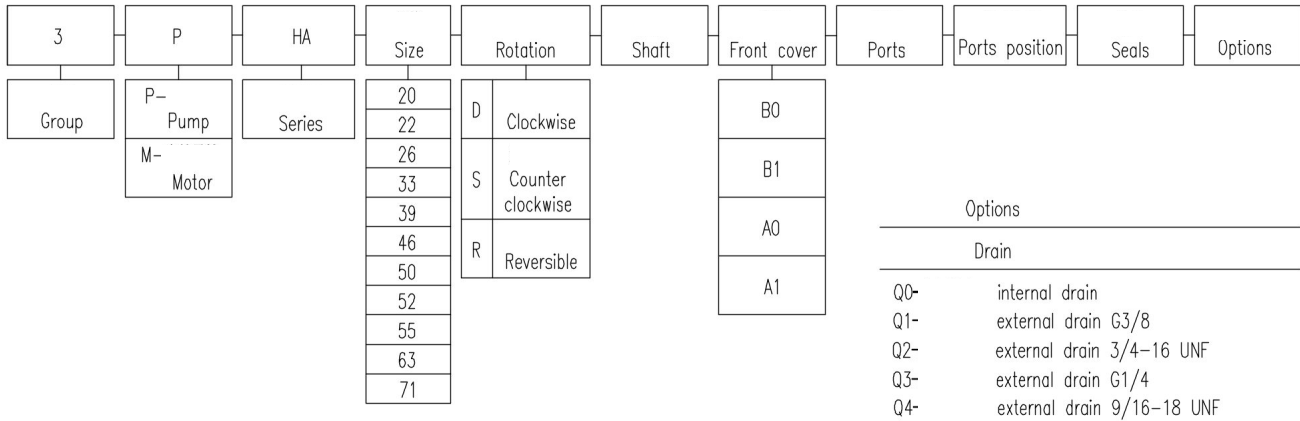


HOW TO ORDER



Ports position

Omit-Side inlet and side outlet
 A-Front inlet and front outlet
 B-Back inlet and front outlet
 C-Back inlet and side outlet
 D-Side inlet and front outlet
 R-Back inlet and back outlet

Seals

Omit-Range between -10°C and $+80^{\circ}\text{C}$, inlet pressure up to max. 3 bar absolute.
 V-Version suitable for fluid at hi-temperatures, range between -10°C and $+120^{\circ}\text{C}$.
 H-Version suitable for fluid at low-temperatures, range between -40°C and $+80^{\circ}\text{C}$.
 T-Version suitable for inlet pressure up to max. 3 and 6 bar absolute.
 N-Version suitable for inlet pressure up to max. 3 and 10 bar absolute.

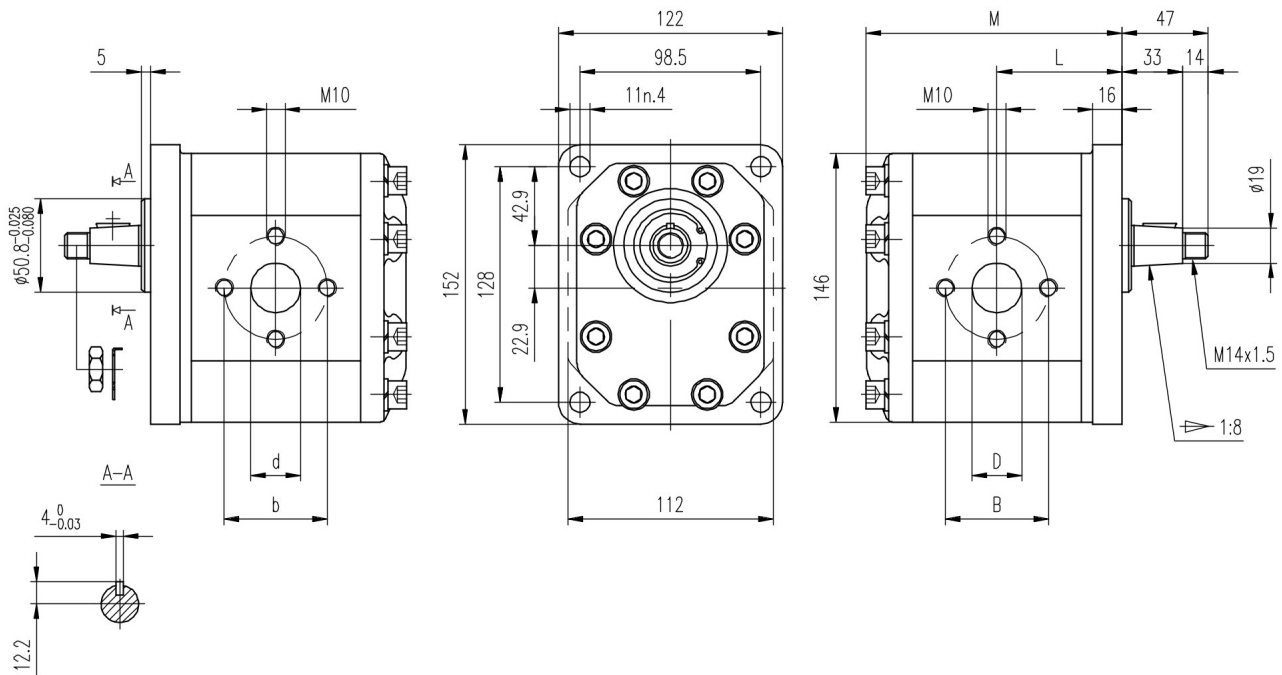
Examples:

3PHA-20-D-C0-B0-F0 =
 clockwise rotation, 20 cc/rev, B0 front cover, C0 parallel shaft, setting ports F0 type, standard seals
 3PHA-20-D-T0-B1-E0 =
 clockwise rotation, 20 cc/rev, B1 front cover, 1:8 tapered shaft(T0), setting ports E0 type, standard seals
 3PHA-20-D-C2-A0-F4-N=
 clockwise rotation, 20 cc/rev, A0 front cover, C2 parallel shaft, setting ports F4 type, high pressure seals(N)

M10 thread depth 18,
 To mount the pump, n.8 M10 screws,
 with a torque wrench setting fixed
 at 47 ± 3 Nm.
 Shaft M14x1.5 nut, with a torque
 wrench setting fixed at 80 Nm.

OUTLET

INLET



Type	Displacement (cm ³ /rev)	Max pressure			Max. speed (r/min)	Min. speed (r/min)	Dimensions					
		P1 bar	P2 bar	P3 bar			M mm	L mm	B mm	D mm	b mm	d mm
3PHA-20-D*B1	20	250	265	280	3500	600	128	63	56	27	56	19
3PHA-22-D*B1	22	250	265	280	3500	600	130	64	56	27	56	19
3PHA-26-D*B1	26	250	265	280	3000	600	133	65	56	27	56	19
3PHA-33-D*B1	33	230	250	270	3000	500	139	68	56	27	56	19
3PHA-39-D*B1	39	230	250	270	3000	500	146	72	56	27	56	19
3PHA-46-D*B1	46	230	250	270	3000	500	152	75	51	27	51	27
3PHA-50-D*B1	50	220	240	260	3000	500	156	77	56	27	56	27
3PHA-52-D*B1	52	220	240	260	3000	500	158	78	56	27	56	27
3PHA-55-D*B1	55	200	230	250	2800	400	160	79	62	33	51	27
3PHA-63-D*B1	63	200	230	250	2800	400	168	83	62	33	51	27
3PHA-71-D*B1	71	180	200	220	2500	400	175	86	62	33	51	27