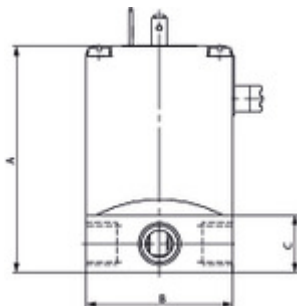


Datum: 03.11.2024

2/2-way solenoid valve, NC, G 1/4, PN 0-5, FPM, 12V DC

Kategorija: [Media-separated 2/2-way solenoid valve, NC, directly operated, DC](#)
Šifra: **124902RIE**

(slika je simbolična)

Kratek opis

Media-separated 2/2-way solenoid valve, NC, brass, G 1/4, PN 0-5, direct. opera., 12V DC, Med.temp. 0 to 90, Amb.temp. 0 to 55

Media-separated solenoid valves are an important component in the control of fluids in systems. With these direct or pilot operated valves only the fluid housing and the separating diaphragm come into contact with the medium.

Thus, these valves can withstand many different media (see resistance chart). In addition, the brass housing meets all the conventional potable water requirements. The direct controlled valve in the 3/2-way design can be used either as a mixing valve or for any desired flow direction.

The pilot operated valve is normally closed in the basic position. By simply turning the 3/2-way pilot valve, the basic position can be changed to normally open.

Tehnične Specifikacije

| | |
|------------------------------|--|
| Električni priključek | Pin terminal acc. to DIN EN 175301-803 |
| Ffunkcija | normally closed (NC) |
| IP zaščita | IP65 (with connector socket fitted) |
| Navoj | G 1/4 |
| Notranji deli | Brass |
| Ohišje | Brass |
| Sedež ventila | Brass |
| Tesnilo | FPM |
| DN | 4 |
| Max. obratovalni tlak [bar] | 5 |
| Napetost | 12V DC |
| C [mm] | 18.0 |
| B [mm] | 46.0 |
| Max. sobna temperatura [°C] | 55 |
| A [mm] | 71.0 |
| Max. temperatura medija [°C] | 90 |